

**ie** UNIVERSITY

IE University undergraduate programs are designed for students who approach learning as a way of life, who are open to the world and the transformative role of higher education.

# Our Campus

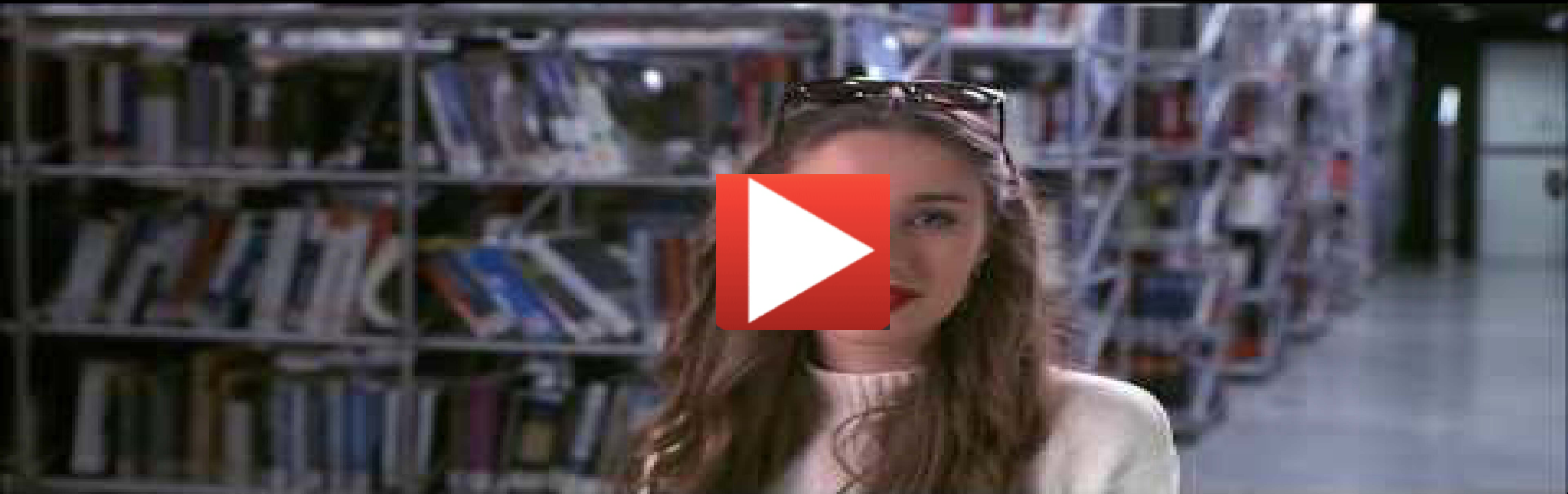
Two  
Locations,  
One  
Experience



Segovia



Madrid





Madrid

ie

ie







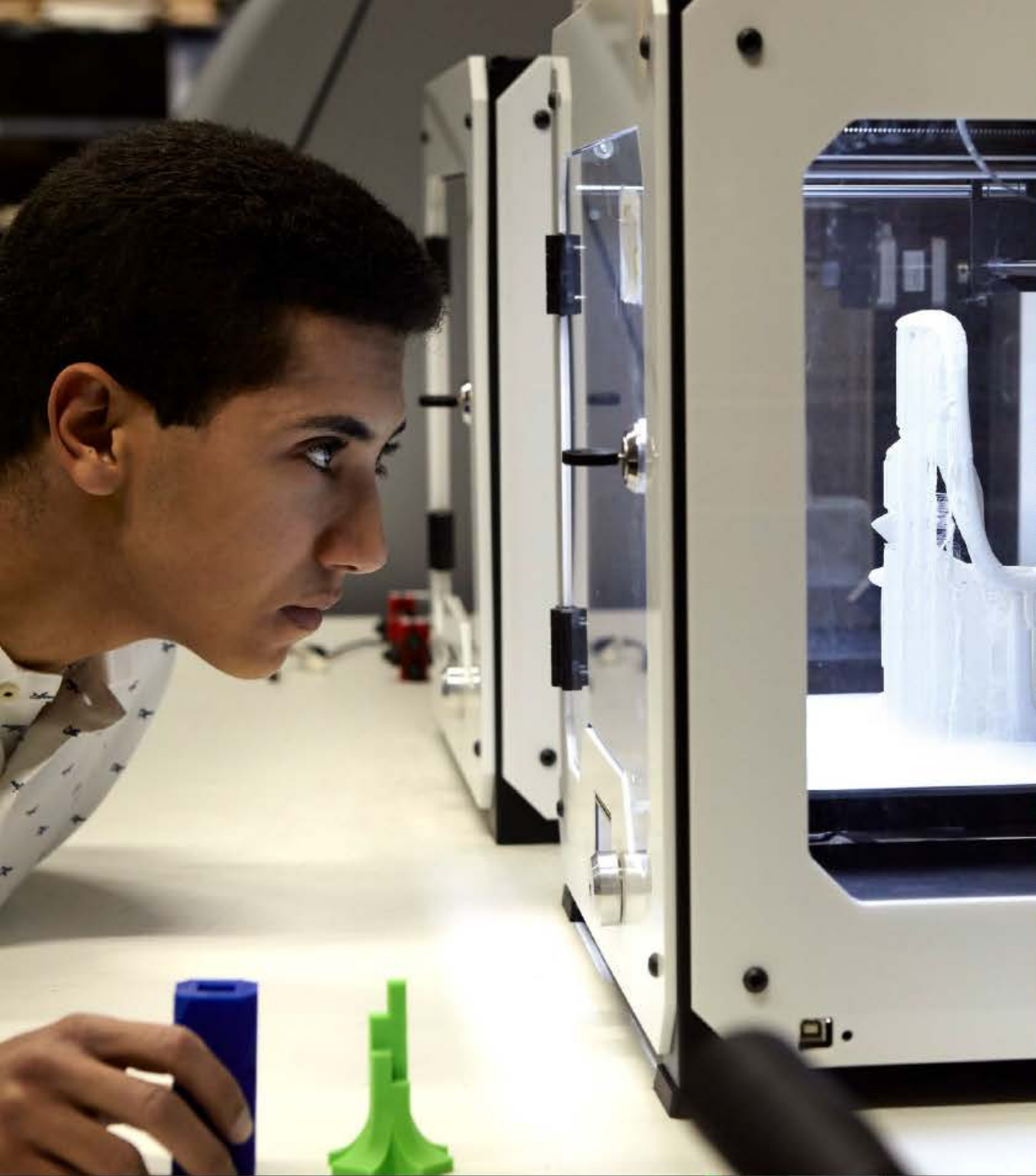


# The New Tower



# Segovia







# Our Studies

## Official degrees

(European Higher Education Area)

APSIA

DesignIntelligence



# Recognition



Architectural Studies

---

Behavior and Social Sciences

---

Business Administration

---

Communication and Digital Media

---

Computer Science and Artificial  
Intelligence

---

Data and Business Analytics

Design

---

Economics

---

International Relations

---

Philosophy, Politics, Law  
and Economics (PPLE)

---

Laws (LL.B)

# Bachelors

Business Administration  
+ Data & Business Analytics

---

Business Administration  
+ International Relations

---

Business Administration  
+ Laws

---

Philosophy, Politics, Law and  
Economics + Data & Business  
Analytics

---

Laws + International Relations

# Dual Degrees

Our  
Students



4,100

Total number of students



55%

Women

45%

Men



130+

**Nationalities  
in the undergraduate  
student body**

50+

Different  
education  
systems

75%

Non-Spanish  
students

45+

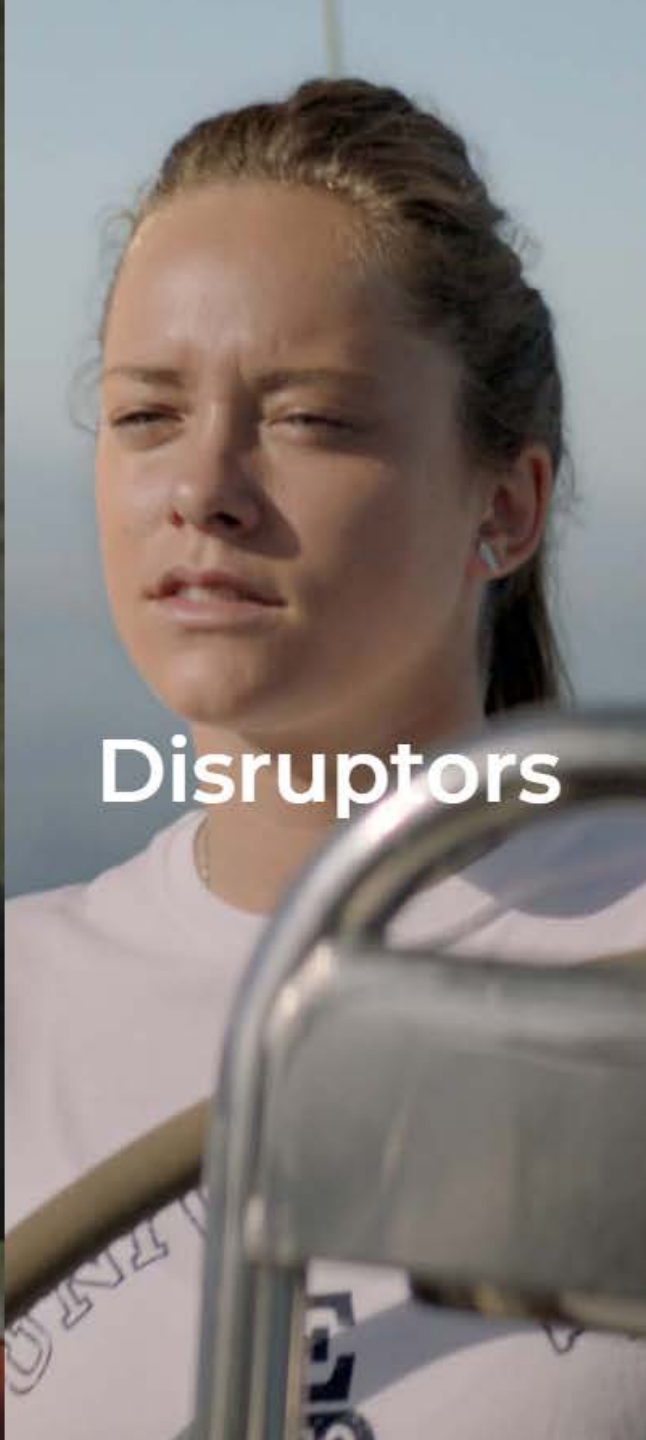
Languages  
spoken on  
campus

# Our Student Profile

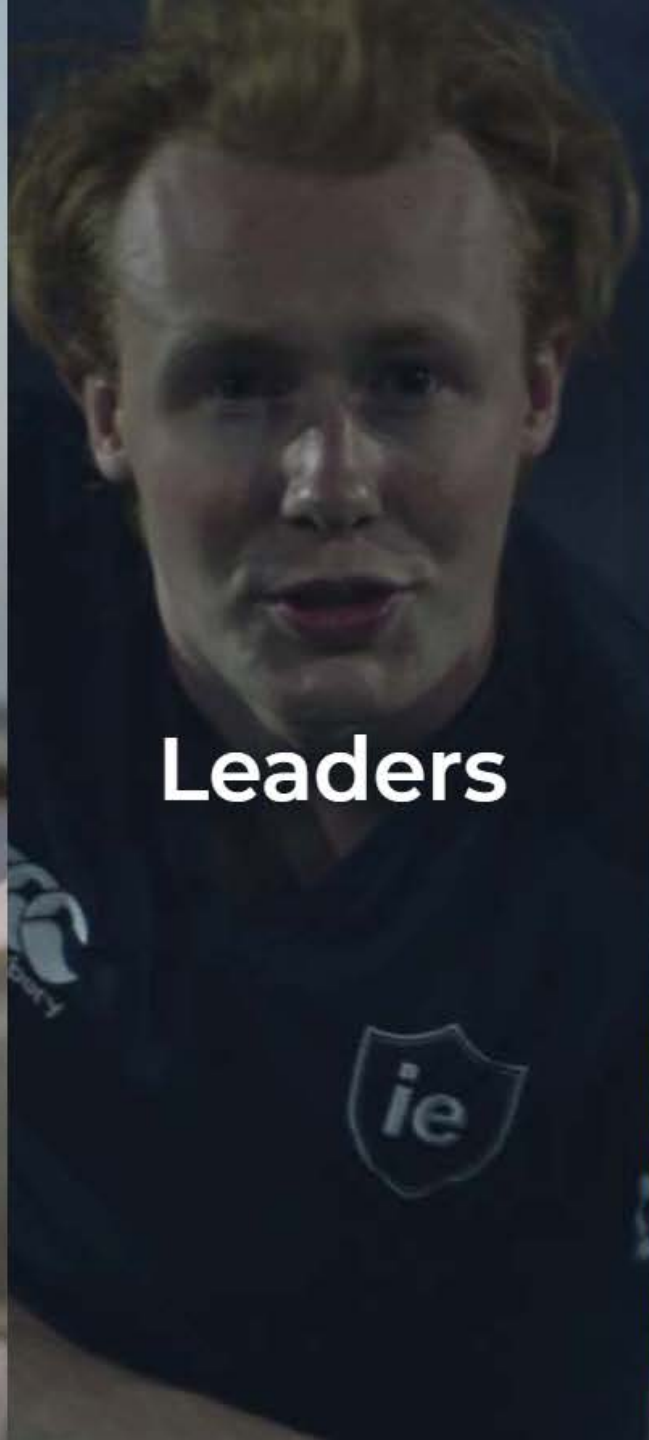




**Passionate**



**Disruptors**



**Leaders**



**International**

# Career Report



95%

of IE University's Class of 2018 job seekers reported they were currently employed

5%

of IE University's Class of  
2018 graduates launched  
or joined a startup



## Key employability facts

43%

20%

25%

of job seekers work  
outside their country  
of origin

of non-Spanish job seekers  
stayed to work in Spain

of graduates are pursuing  
further education

amazon.com

L'ORÉAL  
PARIS

BBVA

TWA

J.P.Morgan

 MSD



Deloitte.

Google

McKinsey  
& Company

NUVOLARI ✦ LENARD™

 Unilever

 CEPSA

 UNIDO

Goldman  
Sachs



**Pablo Jódar**

Spain

Global Investments  
Analyst at JPMorgan  
Chase & Co in  
Switzerland

Graduate of the  
Dual Degree  
in Business  
Administration  
and Laws



J.P.Morgan



**Valentina  
Clara Rojas**

Spain

Area Manager at  
Amazon in Spain

Graduate of the  
Dual Degree in  
Business  
Administration  
and International  
Relations



McKinsey  
& Company



L'ORÉAL  
PARIS



ESTÉE LAUDER

McKinsey  
& Company

Eduardo Dillon &  
Bernardo Dillon  
Argentina

Managers at  
Quadriga in Mexico

Graduates of the  
Bachelor in Business  
Administration



BnGet.com



Sharai Mporu  
Zimbabwe

Analyst at  
ThirdWay Africa  
in Zimbabwe

Graduate of  
the Dual Degree  
in Business  
Administration  
and Laws



TWA

HAVAS

Goldman  
Sachs



# International Exchanges

**The United Kingdom**

University of Exeter  
Leeds University  
University of Essex

**The Netherlands**

University of Amsterdam  
Rotterdam School of Management

**Germany**

Jacobs University  
Bauhaus Universitat  
EBS Law School

**Switzerland**

University of Applied Science of Western Switzerland  
University of St. Gallen

**France**

ESSEC, Cergy-Pontoise  
Sciences Po, Paris

**Turkey**

Koç University  
Sabanci University

**South Africa**

University of Pretoria

**Southeast Asia**

Singapore Management University

**China**

Tsinghua University  
Hong Kong University  
Hong Kong University of Science and Technology

**South Korea**

Seoul National University

**Japan**

Meiji University

**Australia**

RMIT University  
UST, University of Technology Sydney

**Canada**

Sauder Business School  
British Columbia  
Mcgill University

**The USA**

Babson College  
Syracuse University, New York  
Cornell University

**Mexico**

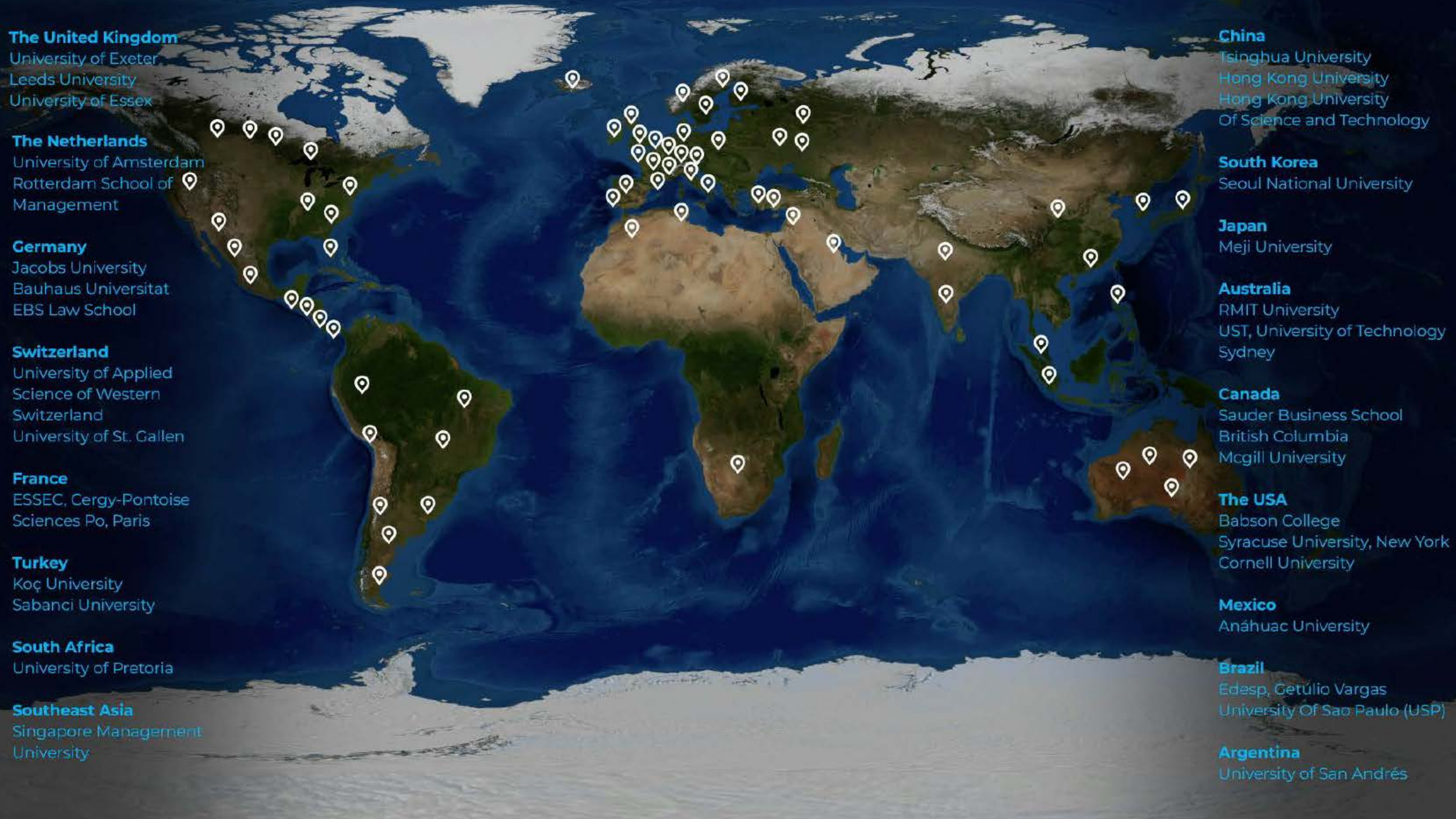
Anáhuac University

**Brazil**

Edesp, Getúlio Vargas  
University Of Sao Paulo (USP)

**Argentina**

University of San Andrés



**The United Kingdom**

University of Exeter  
Leeds University  
University of Essex

**The Netherlands**

University of Amsterdam  
Rotterdam School of Management

**Germany**

Jacobs University  
Bauhaus Universitat  
EBS Law School

**Switzerland**

University of Applied Science of Western Switzerland  
University of St. Gallen

**France**

ESSEC, Cergy-Pontoise  
Sciences Po, Paris

**Turkey**

Koç University  
Sabanci University

**South Africa**

University of Pretoria

**Southeast Asia**

Singapore Management University

**China**

Tsinghua University  
Hong Kong University  
Hong Kong University Of Science and Technology

**South Korea**

Seoul National University

**Japan**

Meiji University

**Australia**

RMIT University  
UST, University of Technology Sydney

**Canada**

Sauder Business School  
British Columbia  
McGill University

**The USA**

Babson College  
Syracuse University, New York  
Cornell University

**Mexico**

Anáhuac University

**Brazil**

Edesp, Getúlio Vargas  
University Of Sao Paulo (USP)

**Argentina**

University of San Andrés



**Partner universities for exchange**

# Admission Process

# 01

## Online Application

Online application form

Admission fee: 120€

Additional documentation

# 02

## Admission Test

IE University's Admission Test or SAT, ACT, LNAT, CAS

# 03

## Online Assessment

As a tech-forward institution, we use virtual assessment as part of our admissions process

# 04

## Personal Interview

Once you have completed the previous steps, the Admissions Committee will review your application and determine whether you can advance to the final interview phase.

# 05

## Final Committee Decision

Place reservation: 2,000€.  
Documentation required for enrollment

**Online  
Application**

01

**Admission  
Test**

02

**Online  
Assessment**

03

**Personal  
Interview**

04

**Final  
Committee  
Decision**

05

# Enrollment Fees



**Admission  
Fee**

**Place  
Reservation**

**Credit  
Recognition**

**Total Annual  
Cost**

**120€**

**2,000€**

**100€**  
per credit

**21,000€**  
Bachelor's  
Degrees

**23,000€**  
Dual Degrees

**2,500€**  
Additional  
for Language  
Proficiency Track

# Financial Aid

The Financial Aid Office offers a wide variety of scholarship programs and loan options.

[www.ie.edu/financial-aid](http://www.ie.edu/financial-aid)



**#WEAREREADY  
IE UNIVERSITY CAMPUS  
REOPENING**

[www.ie.edu/weareready](http://www.ie.edu/weareready)



**Questions?**



Alicia Milan  
International Recruitment Officer- IE University  
[alicia.milan@ie.edu](mailto:alicia.milan@ie.edu)

IE Office Chile  
[Chile@ie.edu](mailto:Chile@ie.edu)

# Contact us

**ie** UNIVERSITY



@ieuniversity

[www.ie.edu/university](http://www.ie.edu/university)